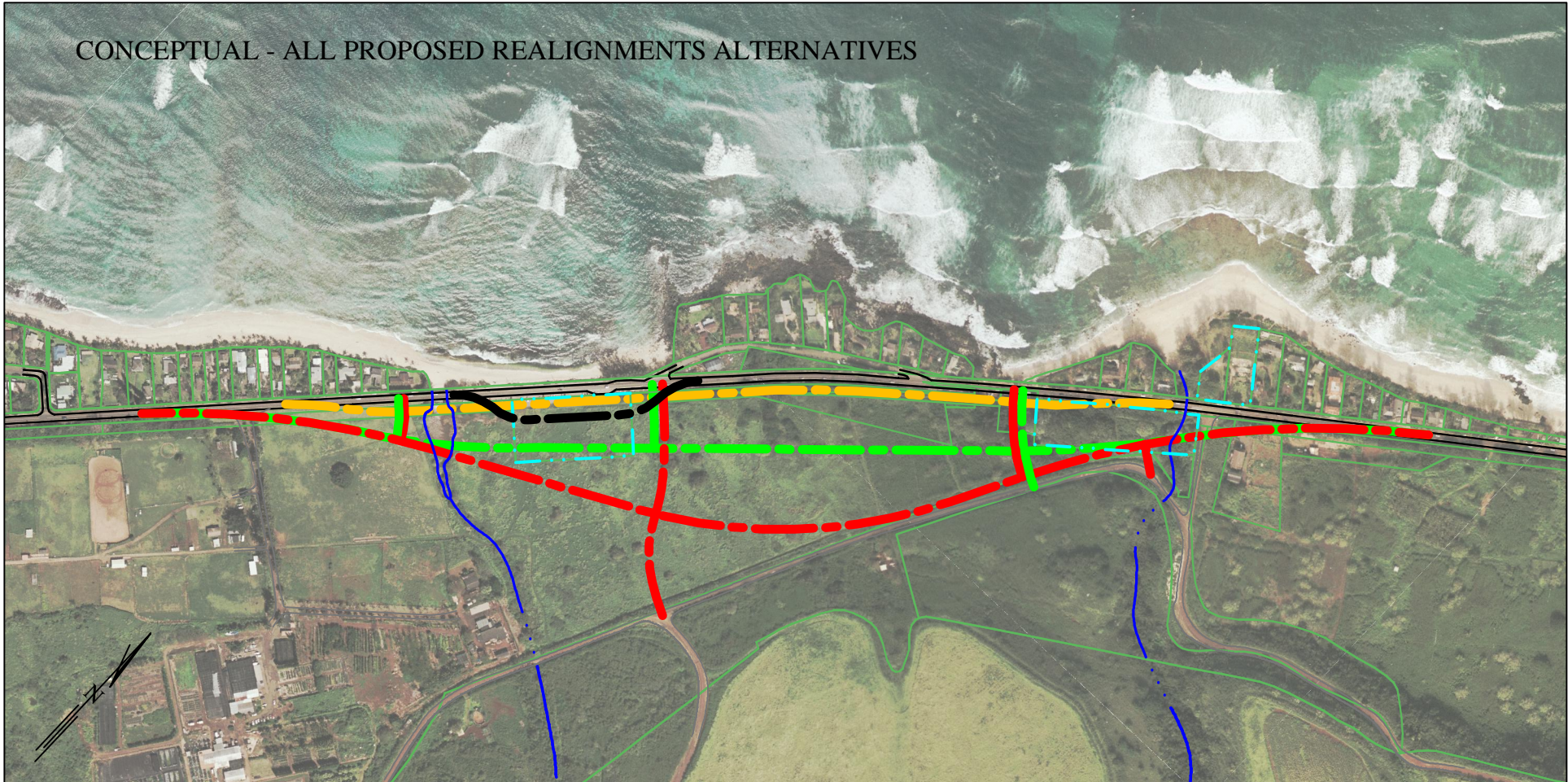






CONCEPTUAL - ALL PROPOSED REALIGNMENTS ALTERNATIVES



LEGEND

-  "Minor" realignment: move highway 60' mauka, includes one new bridge, revetment of shoreline at Laniakea, and elevating the highway.
-  "Moderate" realignment: move highway roughly 250' mauka, includes two new bridges, new access/connector roads, and avoiding the two City-owned parcels to the degree possible.
-  "More" realignment: move highway to the existing cane haul road, includes two new bridges, new access/connector roads, and avoiding the two City-owned parcels to the degree possible.
-  Quinlan's realignment.